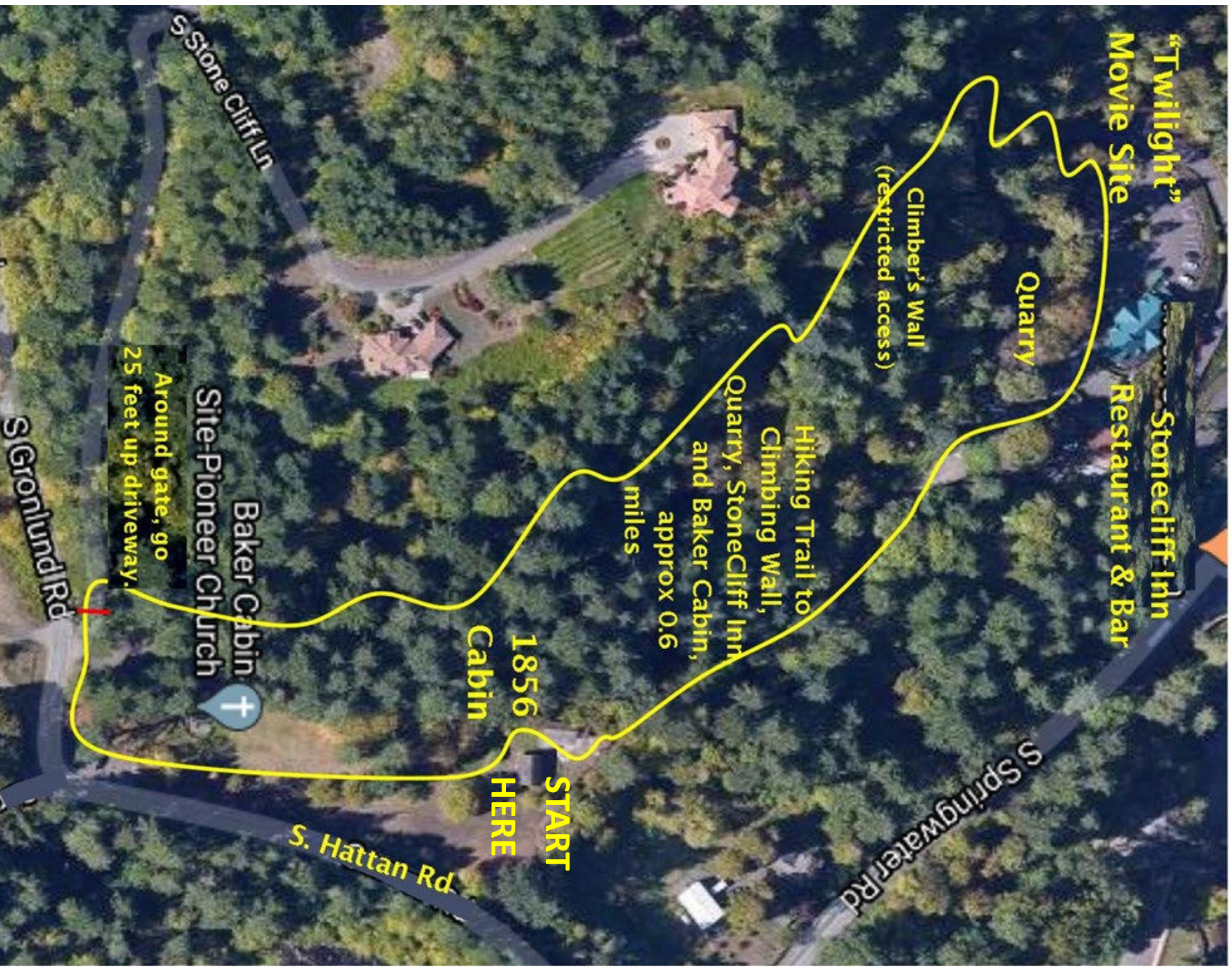


# The Baker Cabin Historic Site

18005 S. Gronlund Rd, Oregon City, Or.

## Visitor Hiking Trail



Start the trail at the 1856 Baker log cabin and head toward the 1895 Pioneer Church. Walk behind the church.

Go through the parking lot, turn right to go up the driveway through the stone gateway, and go 25 feet up the driveway. Turn right to cross the small foot bridge and find the trailhead for the steep and sometimes slick trail heading up the hill to the right

Below you is the Pioneer Church. The church was originally built in 1895 in the town of Logan and moved here in the late 1960s.

As you proceed you will see the 1856 Baker cabin below. Horace Baker also ran the ferry across the Clackamas River so imagine a wagon path coming from the Clackamas River up past the Baker Cabin. For a few decades a rail road ran on that same path. As you continue along the trail, you may see below some of the homes of original settlers of this area, the Hattan family.

Continue on and the trail forks. If you continue up the hill and to the left, you will find the remnants of the Baker basalt quarry. Many local buildings were built using this stone. This former quarry site is used today by recreational climbers. If you look closely you can see some of the modern rope anchors. Climbers are asked to check in at the Stone Cliff Inn before climbing.

Return to the trail junction, walk down through the large boulders and you'll see where scenes from the 2008 Movie "Twilight" were filmed. As the dirt path ends at the Stone Cliff Inn parking lot, there are enamel signs describing the film locations.

The Stone Cliff Inn was built in 2004 with large local fir timbers to commemorate the logging community of Carver and this area.

To return to the Baker Cabin turn to the right down the hill and follow the asphalt to the end of the parking lot. The path continues another 100 feet in the woods to return to the back of the Baker Cabin.

# Walking the Baker Cabin Trail

*Imagine you have just left Missouri; you are in a wagon train with 50 other pioneers heading for Oregon on the trail across the Great Plains.....*

*Well you are not going to have that experience on this trail! Imagine instead that you are in the movie "Twilight" and you are wandering through a deep wet forest with slick rocks underfoot and English ivy surrounding you. This is the Baker Cabin Trail.*

This footpath is a .6--mile route over a steep, rough and sometimes slippery trail. It is a beautiful walk through lofty trees filled with wildlife and through the remains of a stone quarry.

Please take the following precautions before hiking:

- Wear proper footwear—shoes or boots with good traction
- Consider taking a trekking pole, cane or stick
- Part of the trail lies on privately-owned property. Please sign the waiver available at the log cabin before going on the trail.